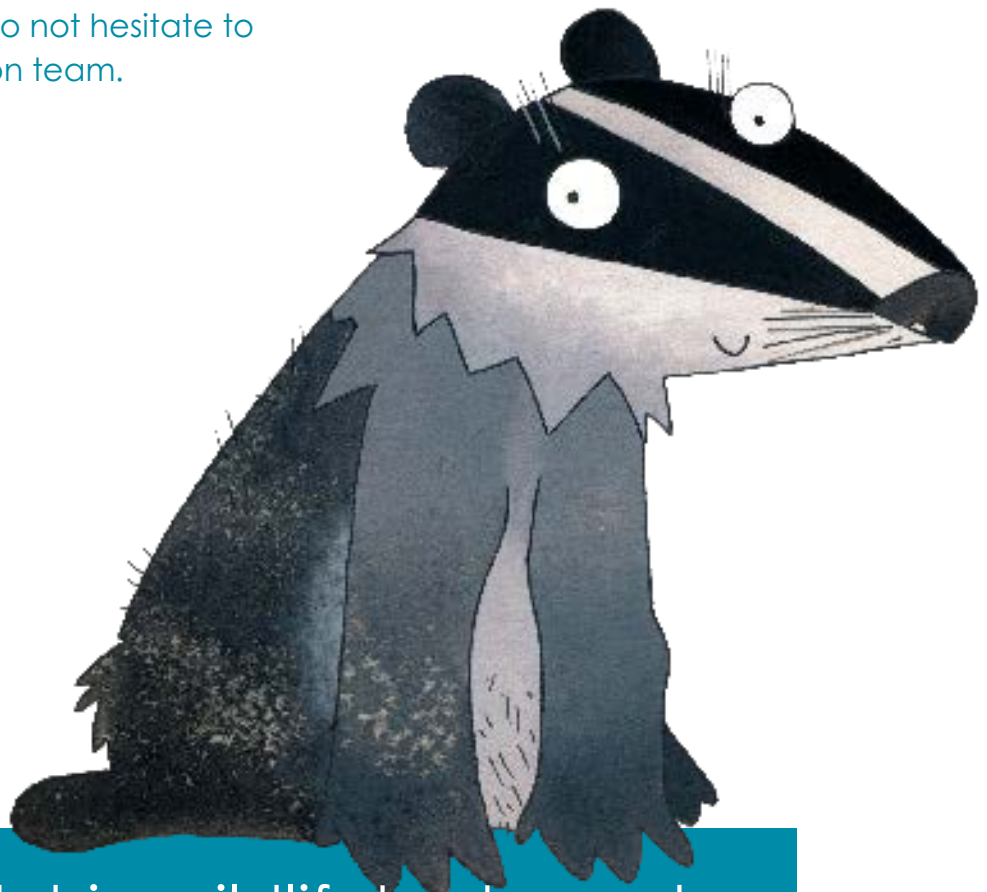




Warwickshire
Wildlife Trust

Uniform Group Programme & Activities

For any more information about how our activities can contribute towards badges and awards please do not hesitate to contact the education team.



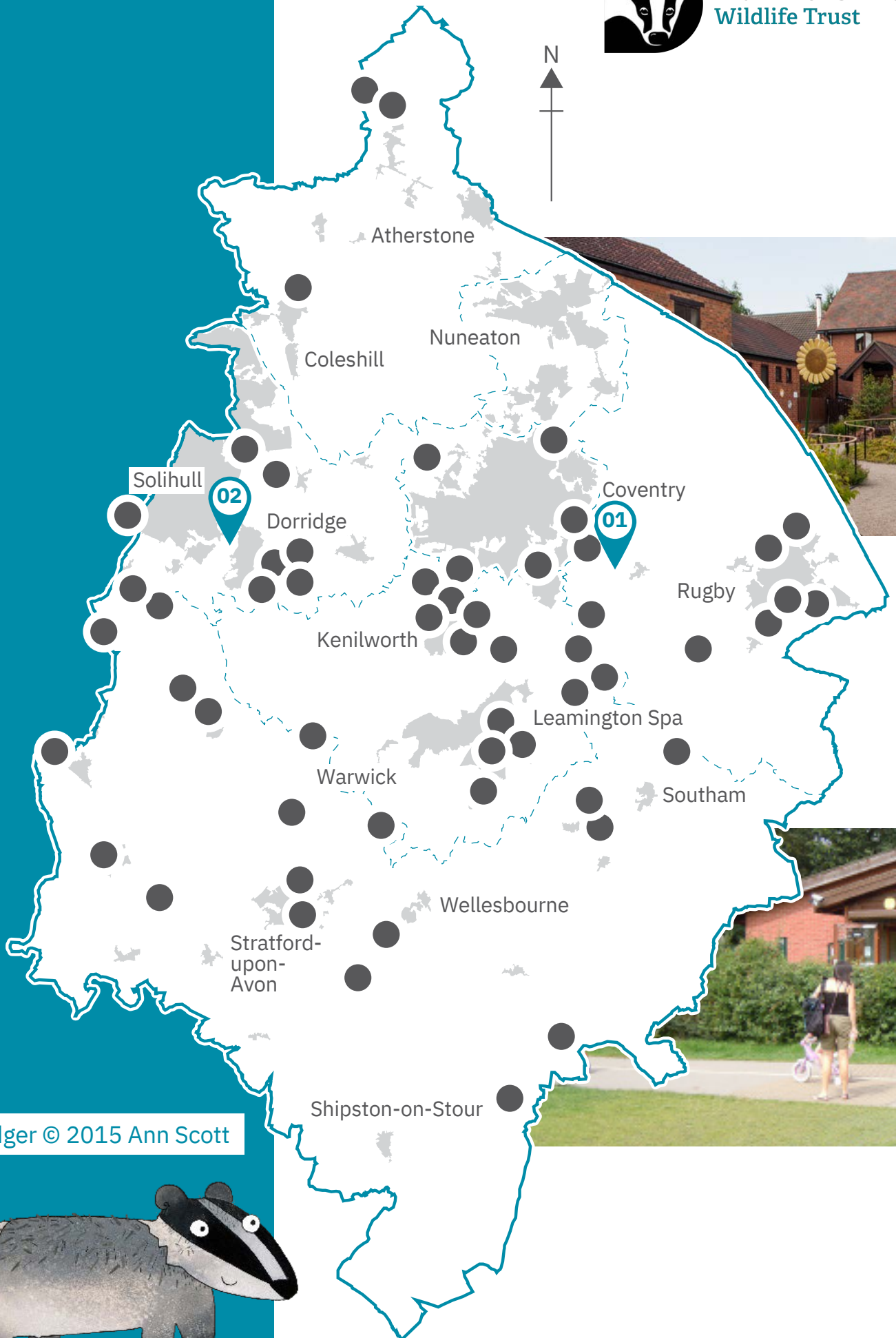
www.warwickshirewildlifetrust.org.uk

Warwickshire Wildlife Trust is a company limited by guarantee.
Registered in England No. 585247. Registered Charity No. 209200. VAT No. 670 3187 40.

Updated 14-08-2023



Warwickshire
Wildlife Trust



Badger © 2015 Ann Scott



We welcome visits
by groups from
areas outside
Warwickshire too!

Our Education Centres

We have two Education Centres that are available for trips, making it even easier for children to engage in some Wild Time!

Brandon Marsh Nature Centre

Brandon Marsh is the ideal place for your group visit as there are excellent opportunities for learning about wildlife, nature and the environment. We have ponds, bird hides, meadows and woodlands all set within our 200 acre nature reserve.

The Education Team can provide your group with a tailored package for your day or evening, which could cover a range of different topics. We have excellent facilities for children of all ages as well as those with special educational needs.

There is an area for children to store their belongings safely during the activities and if you arrive early enough children can visit the gift shop to purchase fun, wildlife souvenirs.



Brandon Marsh Nature Centre

Brandon Lane
Coventry CV3 3GW
02476 308974



Parkridge Centre

Brueton Park
Warwick Road
Solihull B91 3HW
0121 704 0768



The Parkridge Centre

The Parkridge Centre is in a great location in the heart of Brueton Park, Solihull. It is ideal for all children, young and old to explore the area and experience the wonderful nature and wildlife across the enclosed five acre nature reserve. There is a classroom and courtyard for the children as well as a well-marked path through the park.

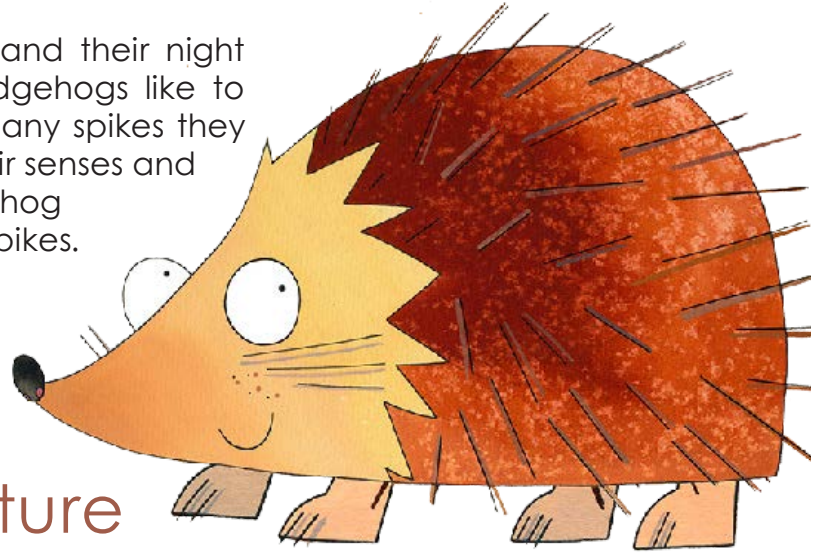
The Nature Reserve has a lake which attracts birds and other wildlife, an arboretum which is ideal for minibeast hunting or den building, a Forest School Woodland and a play area.

The Parkridge Centre is a great place for introducing children to nature and the wildlife that they can find on their own doorstep. The reserve is very secure, with a fence running around it's perimeter with easy access gates, if and when needed.



Prickly Friends

A great introduction to hedgehogs and their night time lives. Learn all about what hedgehogs like to eat, why they are spikey and how many spikes they have? Children can explore using their senses and creativity as they make a mud hedgehog and collect natural materials for the spikes. They'll also get to play some fun hedgehog games and learn all about hibernation.



Woodland Adventure

What makes woodlands such a different habitat? Take part in lots of woodland activities; learn all about animals that live in this habitat, give a tree a hug, and feel the texture of the trees, as you complete a bark rubbing. This session is jam-packed with lots of activities that will keep children fully engaged throughout.

Sensory Explorer

An engaging session that will help your children focus on their five senses whilst visiting us as they join in with five short activities. Explore our nature reserve with your sense of smell as you make smelly potions, use your ears to listen to the sounds, get hands on as you feel the different natural materials, use your eyes to find the hidden mice and of course you'll be doing lots of tasting at dinner time!

Nuts about Nature

Join us on a tour of our nature reserve in this excellent session perfect for first time nature explorers. We will go on a short walk with binoculars and a seasonal spotting sheet to see what things we can find together. In our inspiring art area children will do some natural art work of things they have spotted and they will make something to take back home.

Art in the Wild

Think about all the materials you need to make a masterpiece, but in the wild there are none, or are there? Can your group complete the challenge to create a gigantic picture with natural materials? Then hunt for materials to add some colour to their picture too.



Mammal Discovery

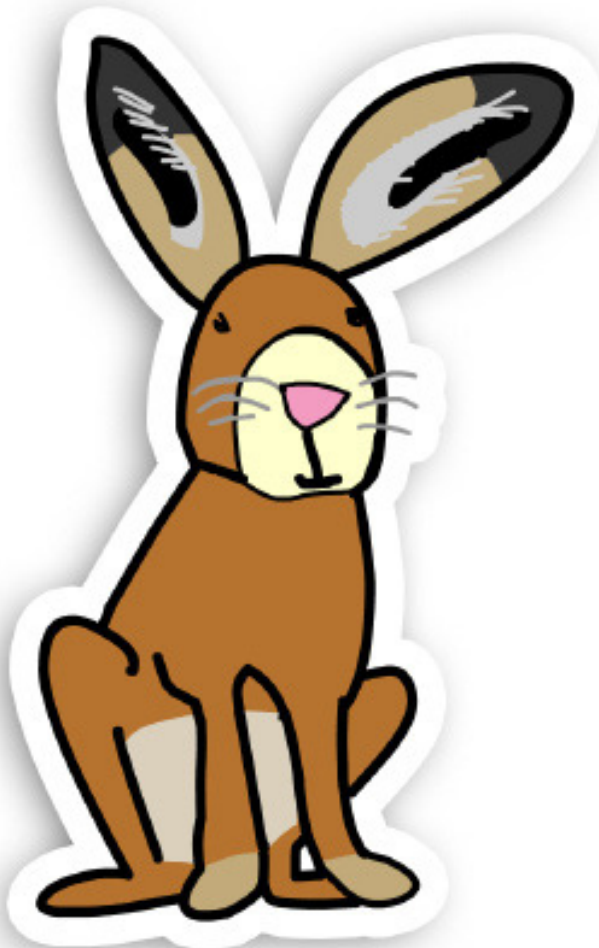
Meet our cuddly mammal puppets and discover what makes mammals, including us, so different from other animal groups. Learn lots of facts about Rabbits, Badgers, Foxes, Moles, Otters and Bats.

Build our animals a home and think about what kind of shelter they would need and how they can stay protected in the wild. Play a sniffy game as we explore some of their super senses.



Bugs and Bees

Come on a mini-beast hunt on our nature reserve. Have a go with our exploration equipment as we go in search of mini-beasts, learn how to collect mini-beasts without hurting them and watch them all run around together, before your group stop to play a team game all about buzzy bees. Children will learn why bees collect nectar and how they make honey back in the hive.



Brilliant Birds

Visit one of our bird hides (Brandon Marsh only) or one of many busy wetland pools (both sites) to see what feathered friends you can spot. Use our binoculars to get a more detailed encounter and use identification guides to help recognise some of the birds and learn about their different adaptations.

Mini-beast Mission

Come on a mini-beast hunt on our nature reserve, have a go with our exploration equipment as we go in search of mini-beasts, learn how to collect mini-beasts without hurting them and watch them all run around together. If your group loves mini-beast hunting then they will be pro's after this 45 minute session of searching. We will also cover their different adaptations and habitats.

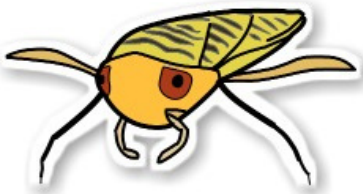


Flowers and Bees



Relax in the calm of our Nature Reserve, wander and explore the many uses of plants and the part they play on our planet. Learn all about the parts of plants and their functions with our fun actions that children will be repeating for days. Before completing our plant jigsaws as children label the plant parts they've learnt. Take a closer look at the flower and explore as a group all the parts different functions and plant reproduction. After all that plant action, children can burn off some energy with our very busy bee relay race and learn why plants are so important for bees.

Underwater Habitats



Have a dip in our pond and hunt for all the creatures that live in this habitat. Can you find any strange mini- beasts that might live in the ponds or maybe some amphibians too? In this flexible session children can explore freely but if they wish they can also play a game that will get them learning the stages of a Frog's Life Cycle and hopping around too.

Den Building

Every living thing needs a home but what makes a good home? Learn together all about shelter and factors that would affect your survival in the wild and then try to build a den to stay safe. You might want a waterproof den, maybe warm and cosy too, it could be camouflaged, what else would you need to survive? This session will get children thinking about survival, shelters and habitats plus teamwork, materials and building.

Team Building

What better setting to get a group working well together than on a Nature Reserve? Enjoy some fun outdoor team challenge games based on wildlife on the reserve and Forest School theories to get everyone working well together. Which team will be the winners and what makes the best team?

Session Costs

Session type	Cost / *Min Fee +VAT
1 Hr Session (up to 30 children)	£115
1.5 Hr Session (up to 30 children)	£135
2 Hour Session (up to 30 children)	£150
Bespoke Visit – 1 Hour	£115
Bespoke Visit – 2 Hours	£150
Talk at your group - 30 Minutes	Price on request
Talk at your group - 1 Hour	Price on request

How to Book

To discuss your visit or make a booking, please contact:

Warwickshire Wildlife Trust Head Office
Brandon Marsh Nature Centre,
Brandon Lane, Coventry, CV3 3GW

☎ Brandon Marsh 02476 308974

☎ The Parkridge Centre 0121 704 0768

For all bookings and enquiries, please contact...



The Education Team

✉ education@wkw.org.uk



Pond Dipping © 2015 Sue Crookes (WildNet)



What you need to know

WHAT TO WEAR?

As we are a Nature Reserve we like to embrace the outdoors, in all types of weather, the majority of your day will be spent outdoors, please come dressed suitably for the occasion.

SUMMER

- Lightweight long sleeves and long trousers - Children may be in long grasses
- Sun hat and cream
- Waterproofs
- Old sturdy trainers or Wellies

WINTER

- At least two long sleeved layers and a coat
- Waterproofs
- Hat, scarf, gloves
- Sturdy shoes or Wellies

RISK ASSESSMENTS

The Trust writes full risk assessments for all the activities it runs for groups. These are not available for schools to use. However if you require a site pre-visit, one of the Education Team can arrange this for you.

☎ 02476 308974 ✉ education@wkwt.org.uk

WE CAN COME TO YOU!

If you would love a visit from one of our Education Officer we are happy to visit you. We offer bespoke on-site sessions and after school programmes.

Uniform Group Programmes & Activities



Warwickshire Wildlife Trust

Brandon Marsh Nature Centre, Brandon Lane, Coventry, CV3 3GW

☎ 02476 308974 ✉ education@wkwt.org.uk

© 2015 Shutterstock

Front Cover - Badger © 2015 Ann Scott